

SANTAQUIN

2,249 SQ. FT.



SPANISH MISSION
ELEVATION



DESERT MODERN
ELEVATION

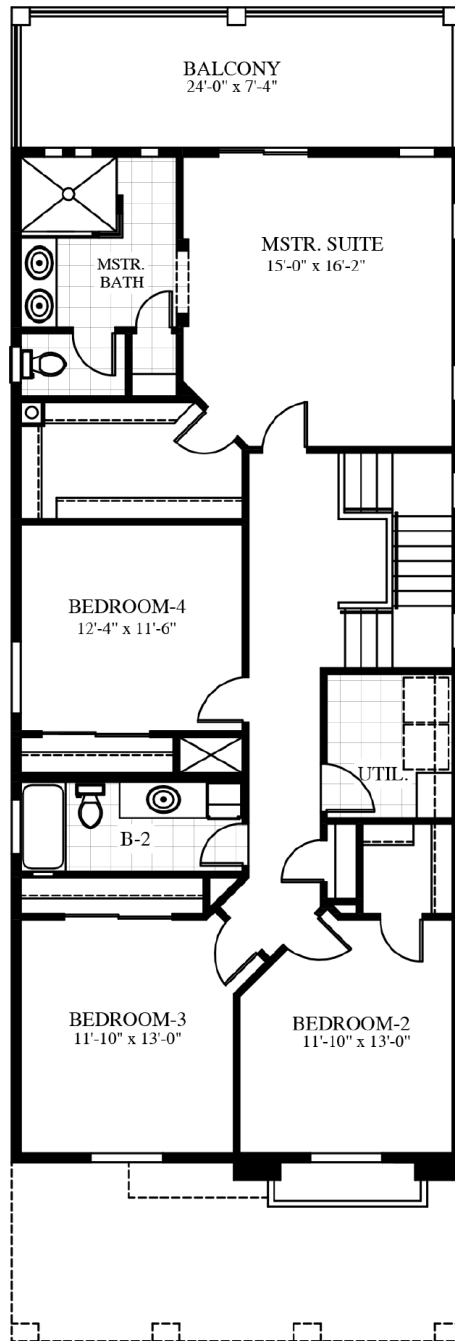


DESERT TERRITORIAL
ELEVATION

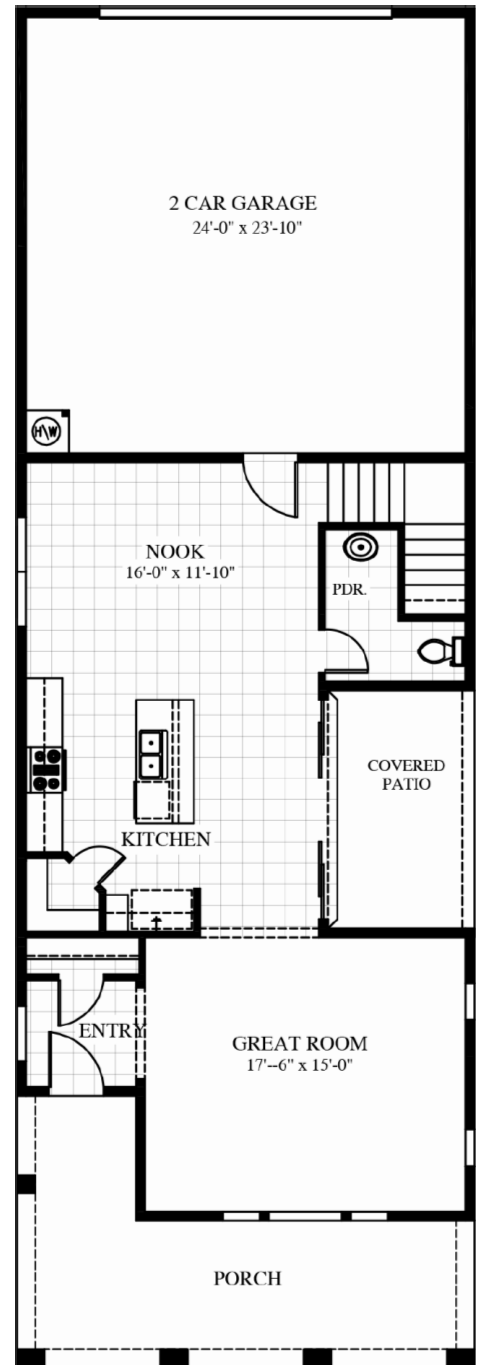
SANTAQUIN

2,249 SQ. FT.

- Two Story
- 4 Bedrooms
- 2 1/2 Baths
- Nook
- Great Room
- Utility Room
- Balcony
- Covered Patio
- 2-Car Garage



SECOND FLOOR



FIRST FLOOR